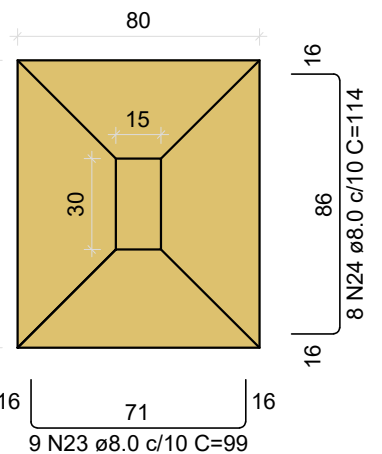
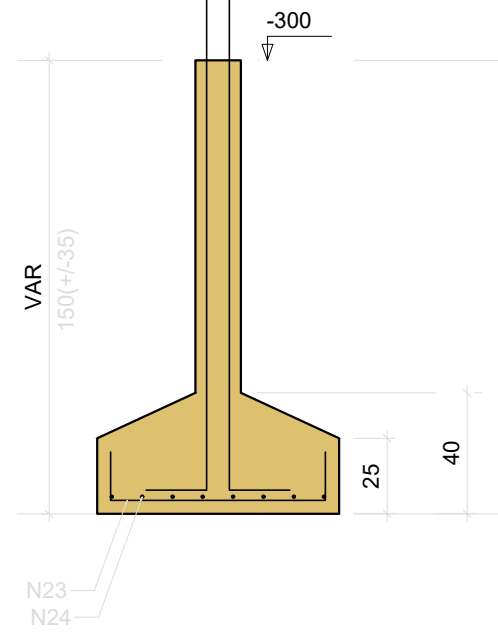


S9=S25  
PLANTA  
ESC 1:25



Solo com capacidade de suporte > 1.50 kgf/cm²  
Solo compactado sobre a sapata  
peso específico > 1600.00 kgf/m³

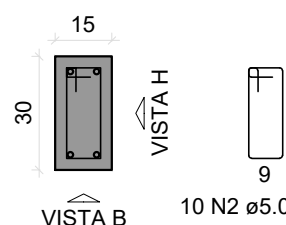
CORTE  
ESC 1:25



P25

FUNDAÇÃO - L1

SEÇÃO  
ESC 1:20



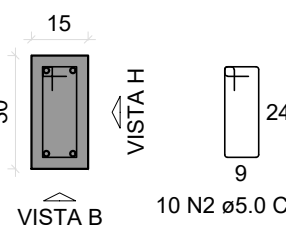
VISTA B  
ESC 1:25



P10=P17

FUNDAÇÃO - L1

SEÇÃO  
ESC 1:20



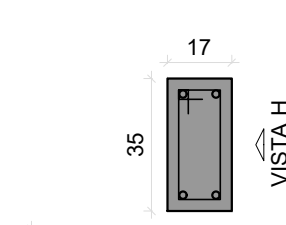
VISTA B  
ESC 1:25



P15

FUNDAÇÃO - L1

SEÇÃO  
ESC 1:20



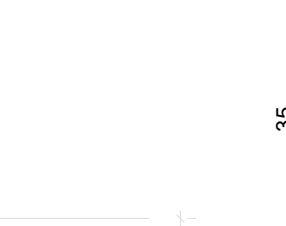
VISTA B  
ESC 1:25



P20

FUNDAÇÃO - L1

SEÇÃO  
ESC 1:20



VISTA B  
ESC 1:25



S20=S21=S43

PLANTA  
ESC 1:25



Solo com capacidade de suporte > 1.50 kgf/cm²  
Solo compactado sobre a sapata  
peso específico > 1600.00 kgf/m³

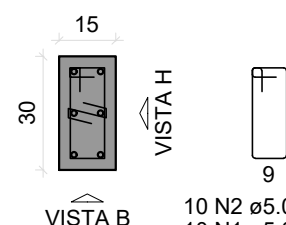
CORTE  
ESC 1:25



P9

FUNDAÇÃO - L1

SEÇÃO  
ESC 1:20

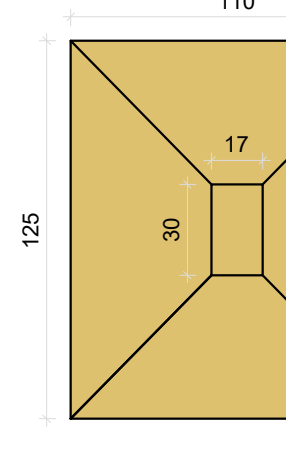


VISTA B  
ESC 1:25

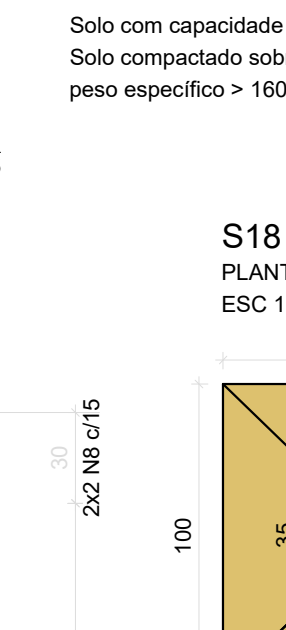


S12

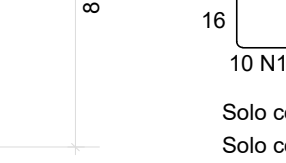
PLANTA  
ESC 1:25



CORTE  
ESC 1:25



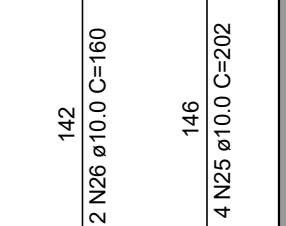
VISTA B  
ESC 1:25



P21

FUNDAÇÃO - L1

SEÇÃO  
ESC 1:20



VISTA B  
ESC 1:25



P18

FUNDAÇÃO - L1

SEÇÃO  
ESC 1:20

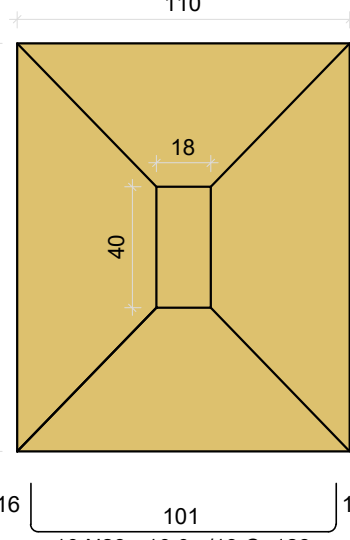


VISTA B  
ESC 1:25



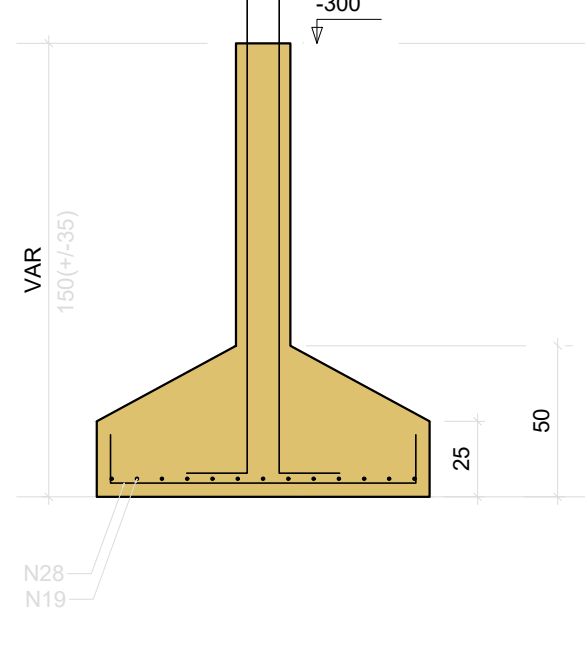
S40

PLANTA  
ESC 1:25



Solo com capacidade de suporte > 1.50 kgf/cm²  
Solo compactado sobre a sapata  
peso específico > 1600.00 kgf/m³

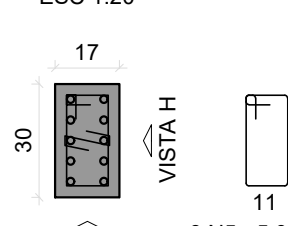
CORTE  
ESC 1:25



P12

FUNDAÇÃO - L1

SEÇÃO  
ESC 1:20



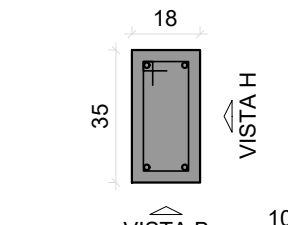
VISTA B  
ESC 1:25



P18

FUNDAÇÃO - L1

SEÇÃO  
ESC 1:20



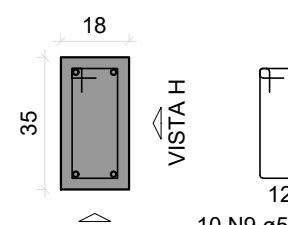
VISTA B  
ESC 1:25



P43

FUNDAÇÃO - L1

SEÇÃO  
ESC 1:20



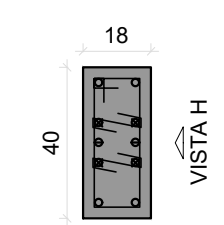
VISTA B  
ESC 1:25



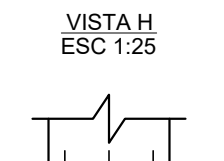
P40

FUNDAÇÃO - L1

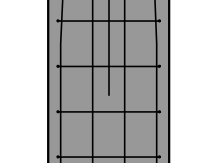
SEÇÃO  
ESC 1:20



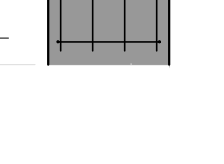
VISTA B  
ESC 1:25



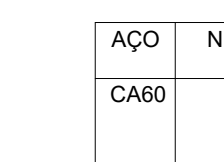
VISTA B  
ESC 1:25



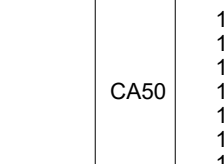
VISTA B  
ESC 1:25



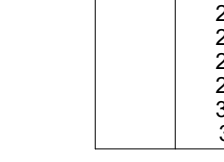
VISTA B  
ESC 1:25



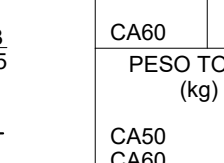
VISTA B  
ESC 1:25



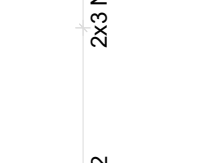
VISTA B  
ESC 1:25



VISTA B  
ESC 1:25



VISTA B  
ESC 1:25



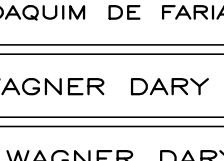
VISTA B  
ESC 1:25



VISTA B  
ESC 1:25



VISTA B  
ESC 1:25



VISTA B  
ESC 1:25



RELAÇÃO DO AÇO

AÇO	N	DIAM (mm)	QUANT	C.UNIT (cm)	C.TOTAL (cm)
P9	2xP10				
P15	2xP10				
P21	2xP10				
P43	2xS10				
S15	S18				
S25	S40				

AÇO	N	DIAM (mm)	QUANT	C.UNIT (cm)	C.TOTAL (cm)
CA60	1	5.0	13	24	312
	2	5.0	40	17	3080
	3	5.0	24	54	1296
	4	5.0	10	26	260
	5	5.0	8	81	648
	6	5.0	4	58	232
	7	5.0	8	91	728
	8	5.0	4	63	252
	9	5.0	40	93	3720
	10	5.0	24	65	1560
	11	5.0	26	27	702
	12	5.0	20	27	540
	13	5.0	8	103	824
	14	5.0	4	70	280
	15	8.0	16	89	1424
	16	8.0	24	104	2496
	17	8.0	15	129	1935
	18	8.0	13	144	1872
	19	8.0	27	154	4158
	20	8.0	8	119	952
	21	8.0	48	159	7632
	22	8.0	45	174	7730
	23	8.0	18	99	1782
	24	8.0	16	114	1824
	25	10.0	34	202	6868
	26	10.0	4	160	640
	27	10.0	10	133	1330
	28	10.0	10	128	1280
	29	12.5	18	210	3780
	30	12.5	4	159	636
	31	12.5	2	94	188

RESUMO DO AÇO

AÇO	DIAM (mm)	C.TOTAL (m)	PESO +10% (kg)
CA50	8.0	319.1	138.5
	10.0	101.2	68.6
	12.5	46	48.8
CA60	5.0	144.3	24.5

CA50	255.9
CA60	24.5

Volume de concreto (C-25) = 5.55 m³  
Área de forma = 23.26 m²

BLOCO DO CORPO DE BOMBEIROS PRANCHAS DE: 098 a 152

REVISÃO	DESCRIÇÃO	REVISADO POR	DATA
REVISÃO 00	EMISSIONAL	WAGNER	MARÇO/2024

SECRETARIA DE ESTADO DA SEGURANÇA PÚBLICA		DIRETORIA DE ARQUITETURA E EDIFICAÇÕES PRAÇA TOBIAS BARRETO, nº 20, BAIRRO SÃO JOSÉ CEP: 49050-220 ARACAUJUS TELS: (79)3210-5454 / (79)9851-9337
---	--	---

TÍPOPROJETO	ESTRUTURAL EXECUTIVO DA CONSTRUÇÃO DO CENTRO INTEGRADO DE SEGURANÇA PÚBLICA (CISP) EM NOSSA SENHORA DA GLÓRIA/SE	Nº DA PRANCHA
		101/438

ASSUNTO:	BLOCO DO CORPO DE BOMBEIROS DETALHAMENTO DE SAPATAS E ARRANQUES
----------	---

END:	RUA ANTONIO JOAQUIM DE FARIAS, S/N - N. SRA DA GLÓRIA - SE
------	--

AUTOR DO PROJETO:	WAGNER DARY DA SILVA
-------------------	----------------------

RESPONSÁVEL TÉCNICO:	WAGNER DARY DA SILVA	RN:	270771497-6
----------------------	----------------------	-----	-------------

ESCALA:	DATA:	DESENHISTA:
INDICADO	MARÇO/2024	WAGNER DARY DA SILVA